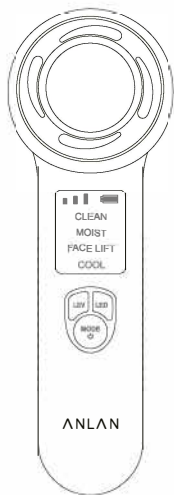


# ANLAN

## Multifunctional Facial Machine

User Manual




※This product is not a medical device used for diagnosis or treatment, but a general household item. Thank you for purchasing the ANLAN multifunctional facial massager. Please read this entire manual carefully before using it to ensure proper use and safe. In addition, this manual is also available as a guarantee, please safekeeping.

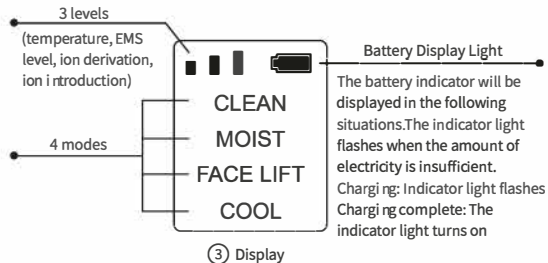
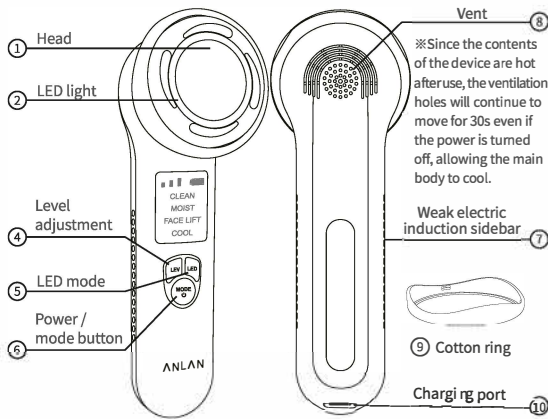
### Safety Precautions

In order to prevent harm and property damage to users, please read this manual carefully and follow the manual step.

	<b>Warning</b>	Inappropriate use can lead to undesirable consequences.
	<b>Attention</b>	Please follow the instructions to use the machine to avoid injury.
	<b>Prohibition</b>	<b>Warning</b>
		<b>Please don't use this device with other medical electronics.</b>
	<b>Mandatory</b>	<ul style="list-style-type: none"><li>● Tiny electro-magnetically damaged implant, such as Pacemaker.</li><li>● Medical electronics for life support, such as artificial heart / artificial lung.</li><li>● Portable medical electronics, such as Device of electrocardiogram.</li></ul>
		<b>Attention</b>
		<b>The people mentioned below should consult a doctor before using the device.</b>
		<ul style="list-style-type: none"><li>● Acute (painful) illness</li><li>● Patients with tuberculosis</li><li>● Patients with facial neuralgia</li><li>● Persons with heart problems</li><li>● Persons with malignant tumors</li><li>● People with abnormal blood pressure</li><li>● Persons suffering from infectious diseases</li><li>● People with hemophilia</li><li>● People with febrile illness</li><li>● People with allergies</li></ul>

 <b>Mandatory</b>	<ul style="list-style-type: none"> <li>From the unstable period in the early pregnancy to those shortly after childbirth</li> <li>Persons with a history of dermatitis such as atopic dermatitis and contact dermatitis</li> <li>Those who worry about their skin when using it</li> <li>People with sensory disturbances due to severe peripheral circulatory disturbances such as diabetes</li> <li>People who have acne, scars or eczema on their skin</li> </ul>
--	--

## Product Structure



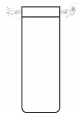
## Specification

<b>Product Name</b>	Multifunctional Facial Machine
<b>Model Number</b>	D828
<b>Product Weight</b>	Appr. 139g
<b>Product Dimension</b>	Appr. 176*60*50mm
<b>Material</b>	ABS, Stainless
<b>Vibration Frequency</b>	8000 rpm
<b>Temperature Control</b>	Hot: 38 °C - 40 °C - 42 °C (± 5 °C) Cold: 12 °C - 8 °C - 6 °C (± 2 °C)
<b>Power</b>	Max 6W
<b>Battery</b>	1000mAh
<b>Charging Time</b>	Appr. 3 Hours
<b>Accessories</b>	User Manual, Type-C Cable, Cotton Ring, Storage Pouch
<b>Warranty</b>	1 year

## Packing List



Multifunctional Facial Machine \* 1



Storage Pouch \* 1



Instruction Manual \* 1



Cotton Ring \* 1



Type-C Cable \* 1

## Before Use



For the first use, we recommend you test the device with your arm. Try it on the skin with cream/skin care before using.



1. Wash your arm with soap, then wipe with cloth.



2. Select "MOIST" mode and apply as described.



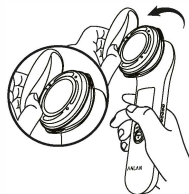
3. If there is no discomfort after 24 hours, you can use the device again.



### Note

- Please remove your makeup and clean your face before using.
- Don't stay in one place for more than 10 seconds.
- Please adjust an proper temperature according to your needs.
- Be sure to touch the metal sensing area when using.
- If your skin is too dry, the device will not work.
- If you feel uncomfortable, stop using it and go to see a doctor.

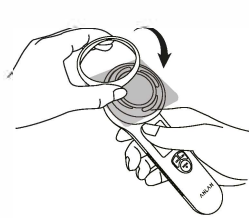
## How to attach / Detach the Cotton Ring



- 1 Open the bolt on the edge and remove the cotton ring



- 2 Put the makeup remover pad on the head of massager.



3 Install the cotton ring



4 Drop the toner on the makeup remover pad, then it can be used after turning on the face massager.

### Mode

※You don't have to keep each mode in order, just set the mode and usage time according to your skin condition and your preference.

Mode	CLEAN	MOIST	FACE LIFT	COOL
Function combination	Ion export Hot Compress Red/Blue light Vibration	Ion import Hot Compress Red/Blue light Vibration	EMS Red/Blue light Vibration	Cool Red/Blue light Vibration
Recommend	Please put a proper amount of lotion on the cotton pad	Use with sheet mask, lotion, serum etc.	Use with lotion, serum, cream etc.	Astringent lotion or lotion with tightening effect

Mode	CLEAN	MOIST	FACE LIFT	COOL
Level	Ion export/ Temperature: 3 levels (Temperature: 38°C-40°C-42°C)	Ion import/ Temperature: 3 levels (Temperature: 38°C-40°C-42°C)	EMS:3 levels	Temperature: 3 levels (Cool: 12°C-8°C-6°C)
Use Frequency	1-2 times per day 5 minutes at a time	1-2 times per day 5 minutes at a time	1-2 times per day 5 minutes at a time	1-2 times per day 2 minutes at a time
Timer	5 Minutes	5 Minutes	5 Minutes	2 Minutes

### How to Use

**CLEAN** 1-2 times a day, 5 minutes at a time

1 Wash your face as usual.



2 Attach the cotton to the head with a cotton ring, and then apply the lotion to the cotton.

※Include the back side of the cotton to the extent that it soaks in. Some lotions (such as mineral springs and water-only ones) may not be effective.



- 3 Press and hold the button to turn on the power, short press to automatically set the "CLEAN" mode.



With a short press of the button, the ion derivation intensity / temperature is adjusted according to the skin condition. (38 °C -40 °C -42 °C)

Short press the button to select blue / red light.



- 4 Grasp the device with your hand, lightly press the head against your skin, and slowly move it outward from the center of your face.

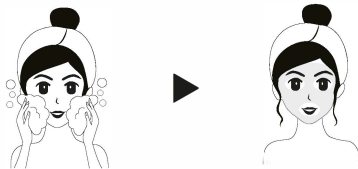
※Hold the weak conductive strip of the main unit with your hand. If you don't touch it, you won't feel any vibration.

- ① From bottom to top
- ② From nose to top
- ③ From the center to the outside of the cheek
- ④ From top to bottom on the side of the nose
- ⑤ From top to bottom under the nose
- ⑥ Chin from bottom to top



MOIST 1-2 times per day, 5 minutes at a time

- 1 After washing your face, apply a sheet mask or lotion to your skin.



- 2 Press and hold the button to turn it on, short press to set the "MOIST" mode.



With a short press of the button, the temperature and iontophoresis intensity are adjusted according to the condition of the skin. (38 °C -40 °C -42 °C)

Short press the button to select blue / red light.



- 3 Grasp the device with your hand, lightly press the head against your skin, and slowly move it outward from the center of your face.

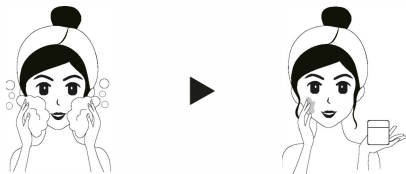
※Hold the weak conductive strip of the main unit with your hand. If you don't touch it, you won't feel any vibration.

- ① From bottom to top
- ② From nose to top
- ③ From the center to the outside of the cheek
- ④ From top to bottom on the side of the nose
- ⑤ From top to bottom under the nose
- ⑥ Chin from bottom to top



**FACE LIFT** 1-2 times per day, 5 minutes at a time

- 1 After washing your face, apply lotion or lotion to your skin.



- 2 **MODE** Press and hold the button to turn it on, short press to set the "FACE LIFT" mode.

**LEV** With a short press of the button, the EMS strength will be adjusted according to the condition of the skin.

**LED** Short press the button to select blue / red light.



- 3 Grasp the device with your hand, lightly press the head against your skin, and slowly move it outward from the center of your face.

※Hold the weak conductive strip of the main unit with your hand. If you don't touch it, you won't feel any vibration.

- 1 From bottom to top
- 2 From nose to top
- 3 From the center to the outside of the cheek
- 4 From top to bottom on the side of the nose
- 5 From top to bottom under the nose
- 6 Chin from bottom to top



**COOL** 1-2 times per day, 2 minutes at a time

- 1 Wash your face as usual.



- 2 **MODE** Press and hold the button to turn on the power, short press to automatically set the "COOL" mode.

**LEV** With a short press of the button, the ion derivation intensity / temperature is adjusted according to the skin condition. (12°C-8°C-6°C)

**LED** Short press the button to select blue / red light.



- 3 Grasp the device with your hand, lightly press the head against your skin, and slowly move it outward from the center of your face.

※Hold the weak conductive strip of the main unit with your hand. If you don't touch it, you won't feel any vibration.

- 1 From bottom to top
- 2 From nose to top
- 3 From the center to the outside of the cheek
- 4 From top to bottom on the side of the nose
- 5 From top to bottom under the nose
- 6 Chin from bottom to top



## Maintenance

- Turn off the power after use. The main body cannot be washed with water. If it is dirty, wipe it off with a towel or tissue that has been moistened and squeezed tightly.
- Never use thinner or benzine.
- Do not put the main body in a fire or overheat.
- Do not leave the product in direct sunlight or near a heating device.
- No one other than a repair technician should disassemble, repair or modify.
- Do not leave the product in a wet place such as a bathroom or in a humid place.
- Store out of reach of children and in a place with little humidity and dust.
- If you do not follow the above precautions and warnings, we will not be responsible for any injuries, malfunctions, damages, etc. caused by incorrect use, disassembly, modification, repair, etc. increase.

## FAQ

**Q: It seems that the device was vibrating again after the power was turned off.**

**A:** After use, the contents of the main body are hot, so even if the power is turned off, the ventilation holes will continue to move for 30 seconds to cool the main body.

**Q: The head does not vibrate.**

**A:** ① It is necessary to make an electronic circuit for the vibration of this product. Grasp the induction sidebar of the main body with your bare hands and lightly touch the head to your skin to create an electronic circuit and vibrate. (If the head is separated from the skin, it will not vibrate because no electronic circuit can be created.)

② Always keep your skin moisturized with lotion or serum. If the amount of water is low, the transmission of vibration between EMS and vibration will be impaired, which may reduce the effect and cause skin problems.

**Q: Can I use it on anything other than the face (body, etc.)?**

**A:** Only for the face. Do not use on anything other than the face.

**Q: I can't attach cotton ...**

**A:** Is it cotton or too big? Please use another cotton.

**Q: Do you remove the ring and use it? Do you use it with it attached?**

**A:** Only CLEAN mode needs to be used with cotton.

In modes other than CLEAN mode, you can use it with the cotton ring removed.

**Q: Isn't it more effective to press it strongly?**

**A:** You don't have to push hard. Apply lightly so as not to put a strain on your skin.

**Q: Can I use it in the bathroom?**

**A:** It is not a waterproof structure. Please do not use it in the bathroom.

**Q: Can I use it with makeup on?**

**A:** Please do not use with makeup on, wash your face before using.

**Q: What is the estimated usage time? Is it okay to use it every day?**

**A:** This product can be used in all modes for a day.

From a simple 2-5 minute course before makeup to a full 17-minute (CLEAN 5 minutes, MOIST 5 minutes, COOL 2 minutes, FACE LIFT 5 minutes) full esthetic course on weekends, depending on your skin condition. You can use it.

You can also use COOL mode every day. It is recommended that you use the other "CLEAN", "MOIST", "FACE LIFT", and "COOL" modes once or twice a day, or two to three times a week, depending on your skin condition.

**Please note:** Excessive use will put a strain on your skin, so avoid using all modes daily.

※ Since the frequency of use and the time of use vary from person to person, avoid excessive use on sensitive areas of the skin.