

DELUX



M631

USER MANUAL

Thanks for choosing our products. Please read the user manual carefully before using this product.

Package Contents



Mouse ×1



Manual ×1



Interchangeable
Left/Right Side
Plate ×2

Compatibility

Compatible with Windows7, Windows 8, Windows 10

Mouse Buttons Function

- | | | |
|----------------|------------|--|
| ① Left button | ⑤ DPI - | ⑨ S1 S2 S3 S4 S5
Custom Function Keys |
| ② Right button | ⑥ Fire Key | ⑩ S6 DPI lock 500 |
| ③ Scroll wheel | ⑦ Forward | |
| ④ DPI + | ⑧ Backward | |



Mouse Specification

Mouse Size	126(L)*73(W)*42.5(H)mm
DPI	1200/2400/3600/4800/6200/10000
Working Voltage	5V
Working Current	≤200mA
Sensor	PAW3327
Report Rate	125Hz-250Hz-500Hz-1000Hz
Cable	1.8m braided cable
Weight	112.5±5g

Mouse Usage

Connect the mouse with your computer by USB port, it can work normally after detecting finished.

1. Lighting effect switch mode

Press scroll wheel+forward key at the same time to switch among 11 lighting effect: Colorful Streaming, Steady, Breathing, Colorful Tail, Neon, Colorful Steady, Flicker, Stars Twinkle, Wave, Reaction, Led Off.

2. DPI

Red-----1200DPI

Green-----2400DPI

Blue-----3600DPI

Yellow-----4800DPI

Cyan-----6200DPI

Purple-----10000DPI

Press the DPI+/DPI- key to switch among 5 gear DPI.

Driver Setting

1. Installation

Download the driver from

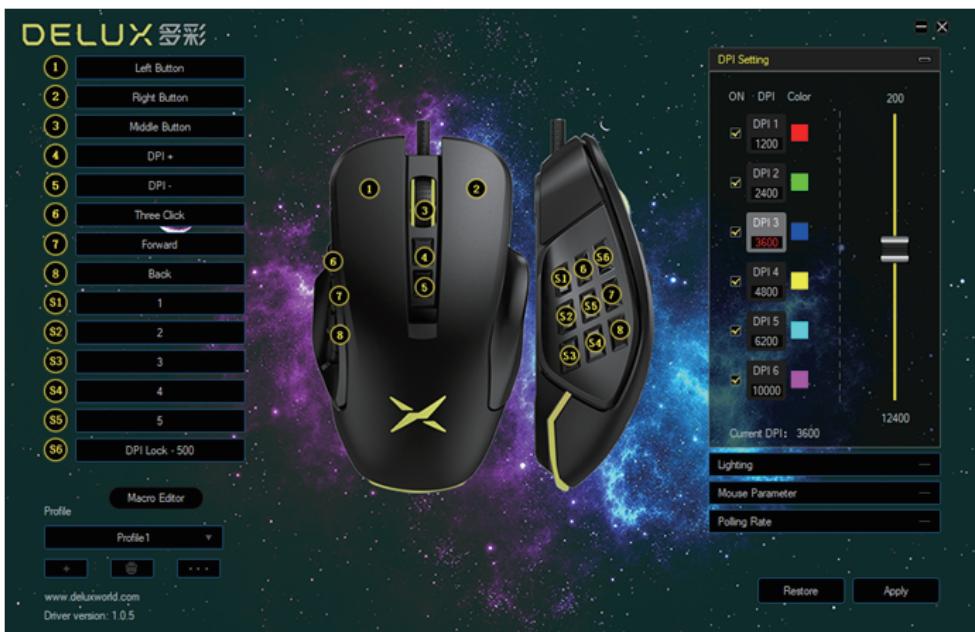
<https://www.deluxworld.com/en/service/download/>

Install the driver.

Note: Please make sure this mouse is already connected to computer when setting the functions in the driver, you can proceed button setting, DPI setting, lighting setting, parameter setting, polling rate setting, Macro setting.

2. Settings

Open driver setting interface (mouse must be connected, otherwise driver software unable to be opened), proceeding button setting, DPI setting, lighting setting, parameter setting, polling rate setting, Macro setting. Multi-group setting are available to be proceeded.



A. Button setting

Click button list to set the button function. All keys are programmable.

B. DPI setting

Click "DPI setting" to modify the DPI and DPI values, and set the light color of the corresponding DPI

C. Lighting setting

Click "Lighting " to set the overall lighting effect of the mouse and select different lighting modes to make the mouse display different lighting effects.

D. Parameter setting

Click "Mouse Parameter" to set mouse sensitivity, scrolling speed, double click speed. After finished setting, click "Apply", then completed whole setting.

E. Polling Rate

Click "Polling Rate" and select the polling rate through the drop-down menu.

F. Macro setting

Click "Macro Editor", entering the macro setting interface, click "new macro", input macro name, then select "macro name", clicking "start recording macro", during the recording process, you can enter the required keys on the keyboard, then click "stop recording macro".

Operation instructions after entering Macro Edition interface: select the key you want to set, click "macro definition" in the drop-down menu, select the macro name, click "Apply", then set successfully.

